



Platelet Storage Systems

Floor Model



Pro Line
powered by
OptiCool™ RT Technology



Pro Line Incubators and Agitators

Industry-leading performance and innovation in platelet storage

Life-saving platelet products are critical to patient care. Helmer Scientific Pro Line floor model incubators and agitators combine innovations in performance, reliability and efficiency to offer optimized platelet storage and support blood bank compliance.



Performance & Reliability

- Precise temperature uniformity
- Reliable operation
- The trusted brand in platelet storage



Monitoring & Control

- i.Center® Plus information center
- Constant monitoring and control
- AgiTrak™ agitation monitoring



Efficiency & Sustainability

- Reduces operating costs
- Supports sustainability
- Meets regulatory standards



Performance & Reliability

Innovations in the Helmer Scientific Pro Line keep platelet supplies safe and ready to use with the reliability you expect.

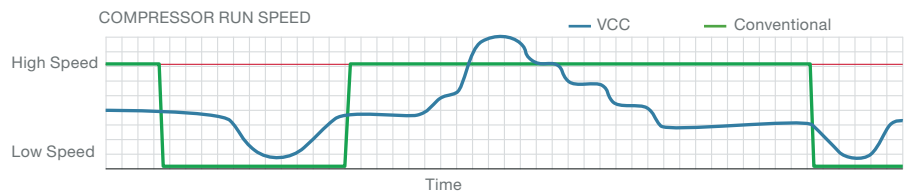
Powered by OptiCool™ RT Technology

The **OptiCool™ RT** system pairs a variable capacity compressor (VCC) and natural hydrocarbon (HC) refrigerants with pulse heating to deliver a reliable storage solution for the safe storage of platelet products.



How a VCC system optimizes temperature performance and energy efficiency:

The OptiCool™ RT system uses intelligent sensors to monitor operating conditions. When the door of the incubator is opened, the VCC runs at a higher speed to deliver optimal temperature performance. When the temperature stabilizes, the VCC runs at a lower speed, resulting in lower energy consumption. The heater pulses off/on to achieve the correct temperature range.



Temperature uniformity

Helmer Scientific uses OptiCool™ RT technology for optimized platelet storage and other applications that require room-temperature storage.

Pro Line models have precision temperature controls and temperature uniformity of $\pm 1^{\circ}\text{C}$, providing a consistent room temperature storage environment.

At an operating set point of 22°C , these models maintain a consistent room temperature storage environment between 20°C - 24°C , thus ensuring your platelet products will not be compromised by temperature excursions.

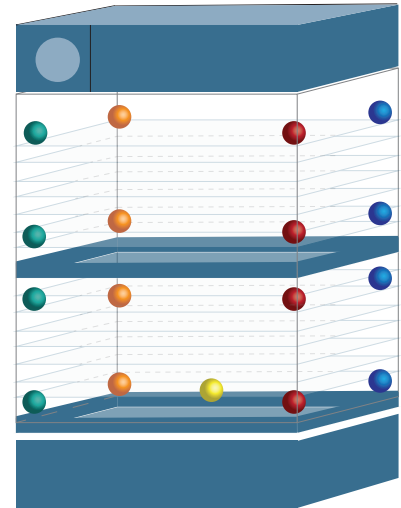
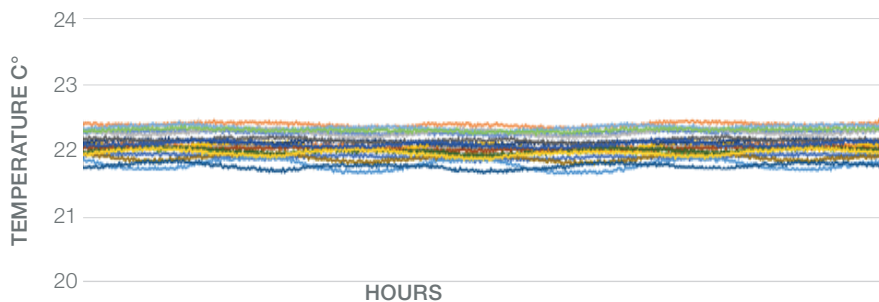


Illustration of test probe locations

Demonstrated Uniformity with Pro Line Incubators

PC2200-Pro with (2) PF96-Pro Agitators, 22° set point



With a continuous operating temperature of 22°C and temperature uniformity of $\pm 1^{\circ}\text{C}$, the Pro Line offers a stable storage environment.

Helmer Scientific: a trusted brand

Helmer Scientific products are a long-term investment and are made to last. All products come with **support for a minimum of 10 years**, including parts, manuals and technical and customer service.

Helmer is the **most trusted brand** for critical temperature-controlled medical storage needs. At least 95% of U.S. hospitals depend on Helmer Scientific as the leader in platelet storage systems*. We provide these solutions to over 130 countries world-wide.

With **more than 40 years of leadership** in the manufacture of medical storage systems, Helmer Scientific is the recognized industry expert in platelet storage. We know that medical storage solutions are a long-term investment, so we apply our years of expertise to the development and maintenance of products that are made to last.



*Based on MD Buyline analysis of U.S. hospitals.



Monitoring & Control

i.Center® Plus Innovative Information Center

The i.Center® Plus information center provides constant temperature monitoring and control, password protected settings, graphs, and reporting functionality to keep products safe and support blood bank compliance.

System status console

Monitor status of the unit with one quick glance at the home screen. Current alarm conditions and alerts appear in red alarm banner across the top when alarm activates for improved visibility to alarm conditions.

Information and Event Center

Performance history is logged. Information recorded includes: alarms, event status, event acknowledgement, min/max temps and 7- and 1-day interactive graphs.

Guardian Plus™ Protection

Define password requirements to securely protect i.Center® Plus settings.

Data Transfer Center

Support compliance by exporting temperature, event, and access data via USB port. Download up to 10 years of data with a wide array of PDF reports that can be generated on-demand including device summary, agitation, settings, historical data, system diagnostics and more. USB port can be disabled to support facility security protocols.



Example of data that may appear on the home screen

Daily Cabinet Temperature Summary:

Note: Duplicate entries may occur due to Date/Time changes

Date	Minimum Temperature (°C)	Maximum Temperature (°C)	Average Temperature (°C)	Time Above High Limit (Minutes)	Time Below Low Limit (Minutes)	Tri Fail
10/01/2022	3.6	4.3	4.0	0	0	
10/02/2022	3.5	4.4	4.1	0	0	
10/03/2022	3.8	4.2	4.0	0	0	
10/04/2022	3.7	4.1	3.9	0	0	

Example of Daily Cabinet Temperature Summary

AgiTrak™ agitation performance monitoring system

Optimize the storage of platelets and monitor compliance with the integrated AgiTrak™ monitoring system:

Multiple alarm options

Agitator motion, door open, power failure, communications failure, and low battery alarms ensure platelets are continuously agitated to support compliance.

Live status monitoring

Real-time speed and cycle count information, minimum and maximum speed for previous hour, and reset cycle count support preventative maintenance.

Agitator Set Up

Set up and monitor agitator motion and speed, set motion alarm delay, and enable or disable alarms. Agitation may be turned off to support other storage applications.

Diagnostics

View operation status details, including lifetime cycle count.



Efficiency & Sustainability

Energy savings reduce operating costs

OptiCool™ RT technology significantly reduces energy usage. Pro Line Incubators are over 75% more energy efficient than traditional incubators. The use of natural hydrocarbons:

Reduces heat output - limiting impact on HVAC system.

Decreases carbon footprint - uses natural hydrocarbons to dramatically decrease global warming potential.

Meets ever changing energy standards - Pro Line incubators are compliant with many regulatory policies and agreements.

Energy use by Helmer Scientific Pro Line models is over **75%** lower than traditional incubators, reducing the total cost of ownership.

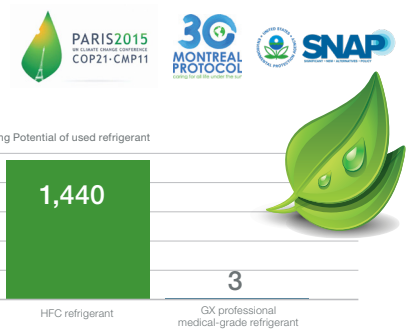
Using an average energy rate of \$0.1279/kWh*, that's an annual savings of up to **\$700 per unit**.

*Based on U.S. Energy Information Administration, commercial sector, Jan 2023



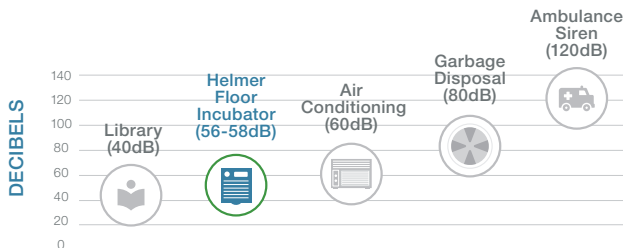
Natural refrigerants support sustainability initiatives

The OptiCool™ RT system uses R600a, a naturally occurring refrigerant that helps meet environmental standards. R600a is Environmental Protection Agency (EPA), Significant New Alternatives Policy (SNAP), Montreal Protocol, Paris Climate Agreement, and EU F-Gas compliant. This natural refrigerant is environmentally friendly, having no impact on ozone depletion and a very low Global Warming Potential (GWP) grade.



Quiet operation improves the work environment

Designed for noise sensitive areas such as labs and blood banks, Pro Line Incubators and agitators are quieter than traditional models leading to fewer distractions for healthcare personnel.



Every increase of 10dB on the scale is equivalent to a 10-fold increase in sound intensity (~doubling of the perceived loudness)

Pro Line incubator models are designed with variable-speed exhaust fans that adjust as needed, providing a quiet work environment for hospital or blood center staff.



Pro Line Platelet Incubators

Floor Model Platelet Incubators

Pro Line Platelet Incubators provide reliable performance, are highly efficient, and are environmentally friendly, offering optimized storage of life-saving platelets.

- **OptiCool™ RT** cooling technology pairs a variable capacity compressor (VCC) and natural hydrocarbon (HC) refrigerants with pulse heating to deliver a reliable storage solution for the safe storage of platelet products.
- **i.Center® Plus Information Center** provides a streamlined user experience, with more security features, record keeping options, and flexibility for interconnectivity with other systems. It includes advanced monitoring and communication with installed Pro Line Agitator and multiple report options.
- **AgiTrak™** agitation performance monitoring system offers live status of speed and cycle information to protect platelets.
- **Uniformity** of +/-1°C maintains consistent chamber temperature.
- **Auto-Stop/Start** pauses agitation when incubator door is opened and automatically resumes agitation when door is closed, ensuring continuous agitation of platelets.
- **Ethernet** capable with API.
- **Battery Backup** for up to 24 hours for monitoring and alarms is included on all platelet incubators.
- **PC4200-Pro** built-in agitator includes pull-out, ventilated drawers which are adjustable and smooth gliding to accommodate different bags and workflows.



Pro Line platelet incubators, floor model

Model Number	Temp Range Set point	Agitator Compatibility	Electrical	Doors	Energy kWh/day	Sound level* dB	Interior Dimensions w x h x d in. mm	Exterior Dimensions w x h x d in. mm	Net Weight lb kg
PC2200-Pro	+20° to +24°C 22°C	PF96-Pro (2)	100-115V 50/60Hz	2 hinged	3.4	56	37.8 x 35.1 x 18.9 961 x 892 x 480	40.1 x 60.1 x 28 1018 x 1526 x 710	406 184
			220-240V 50/60Hz						
PC3200-Pro	+20° to +24°C 22°C	PF96-Pro (3)	100-115V 50/60Hz	2 hinged	3.8	56	37.8 x 50.6 x 18.9 961 x 1286 x 480	40.1 x 75.6 x 28 1018 x 1920 x 710	485 220
			220-240V 50/60Hz						
PC4200-Pro	+20° to +24°C 22°C	Built-in 384 WBD 128 SDP	100-115V 50/60Hz	2 hinged	4.9	58	37.8 x 50.6 x 18.9 961 x 1286 x 480	40.1 x 75.6 x 28 1018 x 1920 x 710	740 336
			220-240V 50/60Hz						743 337

*Stated for incubator with maximum number of compatible agitators running



Pro Line Platelet Agitators

Platelet Agitators

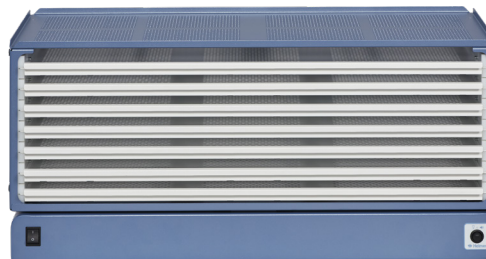
Pro Line Agitators provide the continuous, gentle agitation required to maintain the quality and effectiveness of platelet products.

- **Motion alarm** with adjustable delay and volume ensures platelets remain in continuous motion.
- **Variable agitation speed** can be adjusted to meet the needs of local regulations and specific applications.
- **AgiTrak™ agitation performance monitoring system** allows expanded monitoring and control by Pro Line incubators.
- **Pull-out, ventilated drawers** are adjustable and smooth gliding, enabling optimization of storage space for different types of bags and workflows, such as additional tubing, larger clips, and attached documentation.
- **Gentle Agitation Motor** provides smoother agitation.
- **Versatility** allows the Pro Line agitator to be used within a Pro Line incubator or free-standing in an environmentally controlled room.



Platelet System Compatibility	
Incubator	Agitator Compatibility
PC2200-Pro	PF96-Pro (2)
PC3200-Pro	PF96-Pro (3)
PC4200-Pro	Built-in

Agitator Capacities	
Agitator	Bags
PF96-Pro	96 WBD/Random 32 SDP/Apheresis
WBD - whole blood derived, SDP - single donor platelets	



PF96-Pro

Pro Line platelet agitators							
Model Number	Capacity	Incubator Compatibility	Electrical	Storage	Energy kWh/day	Exterior Dimensions w x h x d in. mm	Net Weight lb kg
PF96-Pro	96 WBD 32 SDP	PC2200-Pro PC3200-Pro	100-240V 50/60Hz* 24VDC with incubator	1 Shelf 7 ventilated drawers	0.27	32.2 x 14.5 x 13.8 818 x 368 x 351	80 37

*Free standing agitators use external AC/DC power supply



Pro Line Options, Accessories and Services



Secondary Monitoring Probe - available on PC3200-Pro and PC4200-Pro models.

Floor and Wall Bracket Kit - Floor mounting brackets and cabinet anchor hardware to secure incubator to the building floor and/or wall.

Remote Alarms - Free standing, extend existing alarms to remote locations with audible and visual signals. Operational up to 3000' (914m) from unit. Can be connected to a central alarm system.

Certificate of Calibration - Model and serial number certified to a NIST (National Institutes of Standards and Technology) traceable instrument. Conforms to ISO 17025 international standards for calibration testing and traceability. Must be requested at time of order.

Temperature Validation Service - Package certifies temperature performance of the incubator. Must be ordered at time of purchase.

IQ-OQ Equipment Validation Guides - Provides documentation for Installation and Operational Qualifications (IQ/OQ), as well as an outline of suggested topics for Performance Qualification (PQ). Guide is available on Helmer Scientific website.

Pro Line Platelet Storage

with OptiCool™ RT Technology

Innovation in platelet storage from the brand hospitals and blood centers trust.

14400 Bergen Boulevard
Noblesville, IN 46060 USA
Toll Free (U.S. and Canada): 800.743.5637
Phone: +1.317.773.9073 Fax: +1.317.773.9082
www.helmerinc.com

Helmer and i.Series are registered trademarks or trademarks of Helmer Inc. in the United States of America. Specifications are subject to change. Certified to UL, CSA and CB standards by a NRTL. Not all products are available in all countries.
© 2019-2024 Helmer, Inc. All rights reserved. Lit. # 380945-1/B 9/24

For information on Pro Line Platelet Incubators and Agitators, **please contact our sales team.**

