



# The First Professional Medical-grade Refrigerators

i.Series® and Horizon Series™ Refrigerators

Pharmacy | Blood Bank | Clinical



**GX Solutions**  
powered by OptiCool™

# What is a professional medical-grade refrigerator?

Professional medical-grade refrigerators are designed with the unique needs of the healthcare environment in mind. Only professional medical-grade refrigerators deliver optimized control in three important areas...



## Temperature management

to safeguard patient samples and ensure medications remain efficacious.



## Noise management

to provide a more comfortable environment for patients and a more productive workplace for staff.



## Energy management

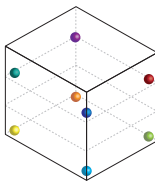
to reduce operating costs and support sustainability initiatives.

## GX Solutions are the first cold-storage solution to offer optimized control in all three areas and offer the following benefits:

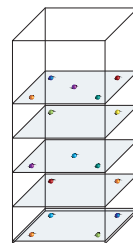


### Temperature Management

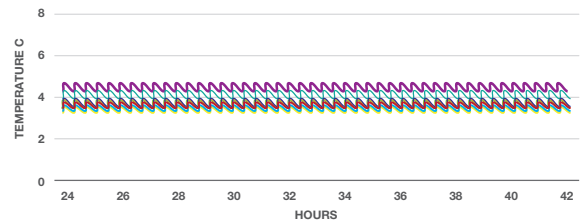
**Uniformity** - Temperatures are maintained within  $\pm 1^\circ\text{C}$  throughout the unit. This provides confidence that contents are stored at the right temperature regardless of where they are placed within the unit.



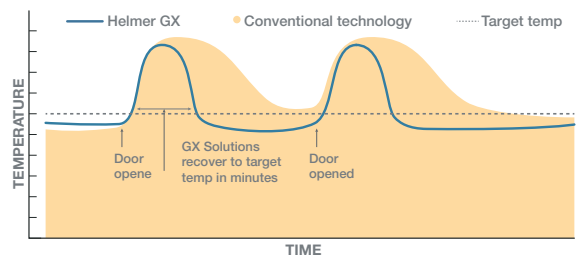
U/C uniformity testing probe locations



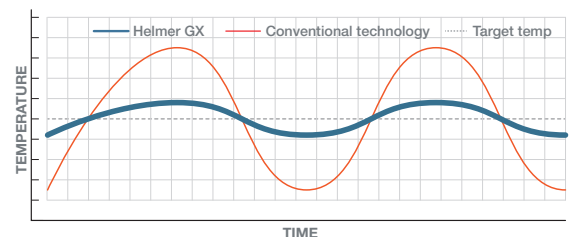
13cf uniformity testing probe locations



**Recovery** - Faster recovery after prolonged door openings. Forced-air circulation keeps contents at the right temperature even when the unit is opened multiple times per hour for stocking, inventory counts and product retrieval.



**Stability** - Maintain superior temperature stability. This creates fewer deviations from the set point and avoids rapid, significant changes in temperature ensuring that patient samples, medications/vaccines or blood therapies are always in their optimal storage environment.

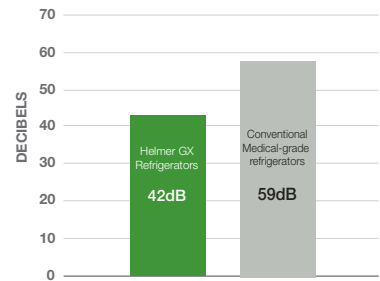


# Professional Medical-grade Refrigeration - OptiCool™ Cooling System



## Noise Management

Designed for noise-sensitive areas such as medication rooms, pharmacies, labs, and patient rooms, GX professional medical-grade refrigerators are up to 3x quieter than traditional models leading to better rest for patients and fewer distractions for healthcare personnel.



Every increase of 10dB on the scale is equivalent to a 10-fold increase in sound intensity. U/C refrigerator example shown.



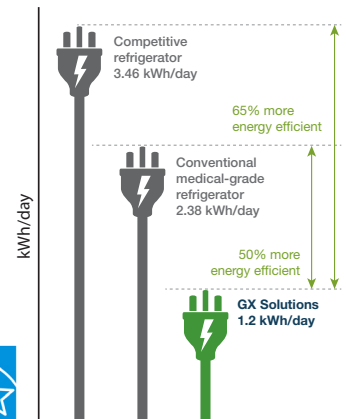
## Energy Management

GX Solutions are ENERGY STAR® certified and 50-65% more energy efficient than conventional medical-grade refrigerators. The use of natural hydrocarbons:

**Reduces heat output** - allows facilities to place refrigerators in small work areas while limiting impact on HVAC system.

**Decreases carbon footprint** - uses natural hydrocarbon (HC) refrigerants to dramatically decrease global warming potential.

**Meets ever-changing energy standards** - GX refrigerants are compliant with the Significant New Alternatives Policy (SNAP).



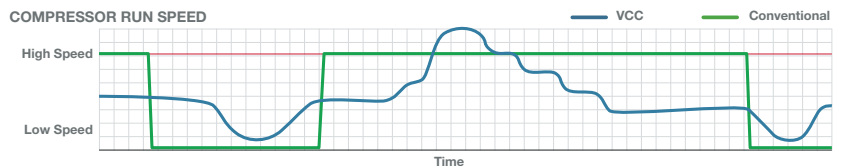
U/C refrigerator example shown.



## Powering the 1st professional medical-grade refrigerators

The OptiCool™ cooling system pairs a variable capacity compressor (VCC) and natural hydrocarbon (HC) refrigerants.

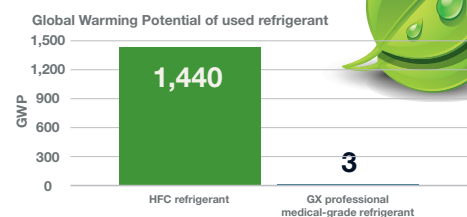
### How does a VCC system optimize temperature performance and energy efficiency?



The OptiCool™ cooling system uses intelligent sensors to monitor operating conditions. When the door of the unit is opened, the VCC runs at a higher speed to deliver optimal temperature performance. When the temperature stabilizes, the VCC runs at a lower speed, resulting in lower energy consumption.

## Natural Refrigerants Support Environmental Sustainability

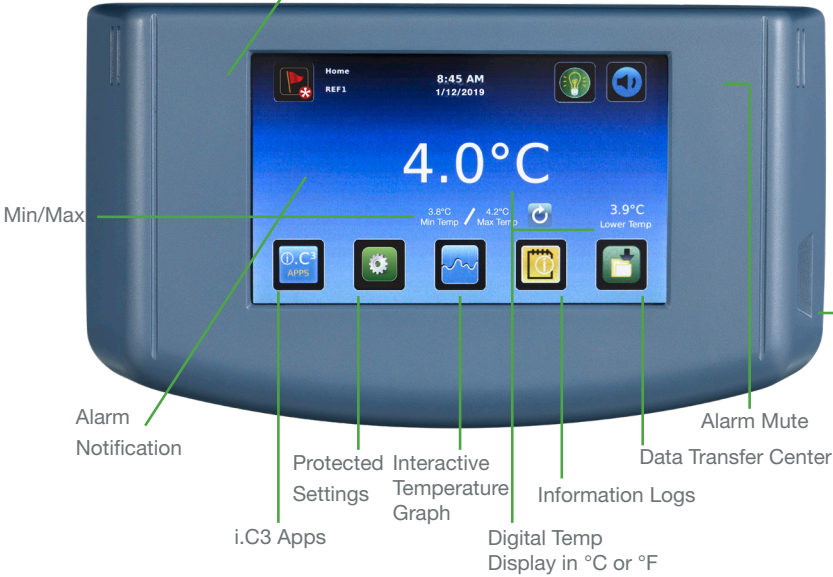
The OptiCool™ cooling system uses R600a or R290 (pass-thru), naturally occurring refrigerants that are Environmental Protection Agency (EPA), Significant New Alternatives Policy (SNAP), and EU F-Gas compliant. These natural refrigerants are environmentally friendly, having no impact on ozone depletion and a very low Global Warming Potential (GWP) grade.



**GX Solutions are available in i.Series® and Horizon Series™ Lines**

**i.Series®**

7" (177mm) door-mounted touchscreen



**i.C3® Information Center**

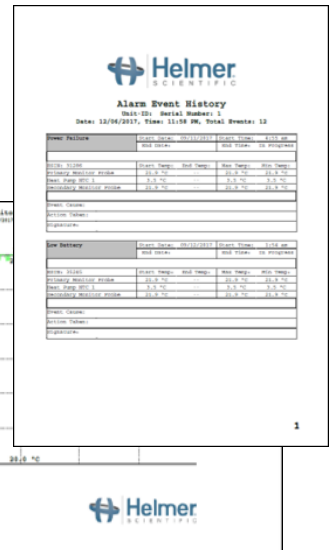
The i.Series i.C3 Information Center provides constant temperature monitoring and multiple information logs while offering security features to keep settings safe.

**System Status Console** - monitor status of the unit with one quick glance at the home screen.

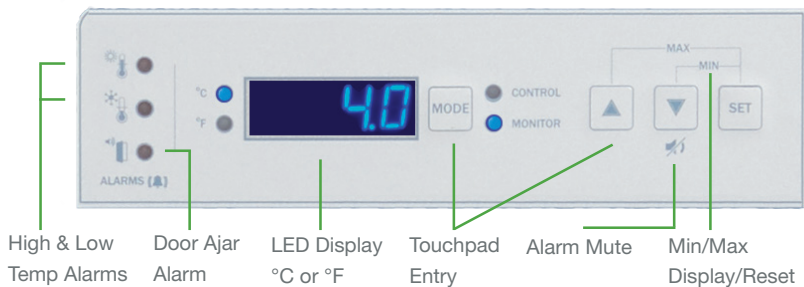
**Information and Event Center** - records performance history of unit including event acknowledgement. Includes event status, min/max temps and 7 and 1-day interactive graph views.

**Guardian Plus™ Protection** - protect settings and limit access with optional integrated electromagnetic access control.

**Data Transfer Center** - export temperature, event and access data via USB port. PDF reports and CSV files available.



**Horizon Series™**



**Horizon Controls**

A digital microprocessor temperature controller with a built-in alarm powers the Horizon Series models. Min/Max display and reset are included. Optional integrated electromagnetic access control offers secure access to the refrigerator via the Horizon Access Control Keypad.

## GX Solutions: i.Series® / Horizon Series™ Comparison

	i.Series®	Horizon Series™
Temperature Display	°C or °F	°C or °F
Monitor/Logging	Event log records date, time and temperature data	N/A
Compliance Data	Download PDF Reports and CSV files via USB port	N/A
Security	Password protected settings / Key lock	Key lock
Temperature Graphing	Interactive temperature graph	N/A
Temperature Alarm Test	Automatic high/low alarm testing (Peltier-based)	Manual alarm test
Alarm Probe(s)	Stainless steel in product simulation bottle 2 - 20-58 cu ft, 1- 5-13 cu ft	1 - Stainless steel in product simulation bottle
Standard Alarms	High and low temperature, Door open, Power failure	High and low temperature, Door open, Power failure
Additional Alarms	Condenser temperature, Probe failure, Low battery	N/A
Min/Max Temperatures	Display and reset	Display and reset
Backup Power	Rechargeable battery backup - 20 hrs	Battery backup - 2 hrs
Connectivity	Ethernet/API, USB ports (2)	N/A
Dry contact alarm connections	Yes	Yes
Digital calibration	Yes	Yes
Warranty	7 yr compressor / 2 yr parts / 1 yr labor*	5 yr compressor / 2 yr parts / 1 yr labor*

\* Warranties applicable in US and Canada. For international warranty information, contact your local distributor.

## Services



**Certificate of Calibration** - Model and serial number certified to a NIST (National Institutes of Standards and Technology) traceable instrument. Conforms to ISO 17025 international standards for calibration testing and traceability. Must be requested at time of ordering.

**Temperature Validation Service** - Package certifies temperature performance of the refrigerator. A multiple point temperature recorder maps the temperature inside the refrigerator chamber and a document with data will be provided with a certificate of calibration for the test instrument. Must be ordered at time of purchase.

**IQ/OQ Equipment Validation Guides** - Provides documentation for Installation and Operational Qualifications (IQ/OQ), as well as an outline of suggested topics for performance qualification (PQ).

**Full Level Service Agreements** - Can be designed to include on-site parts, labor, preventative maintenance and/or calibration services.

# GX Solutions Professional Medical-grade Pharmacy Refrigerators



## Medication and Vaccine Storage

GX professional medical-grade pharmacy refrigerators feature ventilated, pull-out drawers and ventilated shelves for secure storage of vaccines, pharmaceuticals, chemotherapy and other products requiring safe cold storage.

- » Powered by OptiCool™ cooling technology which pairs a variable capacity compressor (VCC) and natural hydrocarbon (HC) refrigerants to create a refrigerator with optimized control in temperature, noise and energy management
- » Factory pre-set to 5°C for pharmacy applications
- » 50-65% more energy efficient than traditional medical-grade
- » Quiet operation for improved work environment (U/C 42dB, Upright 47-50dB)
- » Sustainable U.S. EPA, SNAP, and EU F-Gas compliant natural refrigerants and foaming agents support sustainability initiatives
- » NSF/ANSI 456 vaccine storage standard certified and supports CDC guidelines for vaccine storage
- » ADA compliant full-length handle and compatible with ADA compliant countertops



ENERGY STAR® certified



NSF/ANSI 456 standard certified

## Construction

- » Forced-air circulation maintains chamber temperature uniformity and provides quick recovery after door openings
- » No defrost cycle required to maintain constant temperature
- » Undercounter solid, self-closing door maintains optimal storage conditions and is field-reversible
- » Upright models include a dual-pane glass door(s) with ADA compliant full-length handle
- » Fully extendable, ventilated drawers and stationary ventilated shelves; easy-to-clean and adjustable for storage flexibility
- » Bacteria-resistant powder coated interior and exterior
- » Swivel, locking casters (upright) / Leveling feet (U/C)
- » Recessed floor contains spills for easy clean up and to maintain integrity of stored product
- » Key lock, settings security and optional access control
- » Remote lock adapter kits available for automated dispensing cabinets



i.Series®

Horizon Series™

### GX professional, medical-grade pharmacy refrigerators - undercounter

Model Number	Monitor	Temp Range Set point	Capacity cu ft   L	Electrical	Doors	Ventilated Drawers	Sound dB	Interior Dimensions w x h x d in. mm	Exterior Dimensions* w x h x d in. mm	Net Weight lb   kg
iPR105-GX	i.C3 User Interface	+2° to +10°C 5°C	5.3 150	115V 60Hz 220-240V 50/60Hz	1 Solid	2	42	19.5 x 19.9 x 22.8 496 x 505 x 580	24 x 31.5 x 26.7 610 x 798 x 678	182 83
HPR105-GX	Horizon Controller	+2° to +10°C 5°C	5.3 150	115V 60Hz 220-240V 50/60Hz	1 Solid	2	42	19.5 x 19.9 x 22.8 496 x 505 x 580	24 x 31.5 x 26.7 610 x 798 x 678	182 83

Can be used undercounter, free-standing or stacked. \*Exterior dimensions do not include handle, user interface



*i.Series® models*



*Horizon Series™ models*

## GX professional, medical-grade pharmacy refrigerators - upright

Model Number	Monitor	Temp Range Set point	Capacity cu ft   L	Electrical	Doors	Ventilated Shelves	Ventilated Drawers	Sound dB	Interior Dimensions w x h x d   in mm	Exterior Dimensions* w x h x d   in mm	Net Weight lb   kg
iPR113-GX	i.C3 User Interface	+2° to +10°C 5°C	13.3   377	115V 60Hz 220-240V 50/60 Hz	1, glass	1	5	39	20 x 49.4 x 22.9 508 x 1255 x 583	24.8 x 70.5 x 26.2 628 x 1790 x 664	338 154
HPR113-GX	Horizon Controller	+2° to +10°C 5°C	13.3   377	115V 60Hz 220-240V 50/60 Hz	1, glass	1	5	39	20 x 49.4 x 22.9 508 x 1255 x 583	24.8 x 70.5 x 26.1 628 x 1790 x 663	338 154
iPR120-GX	i.C3 User Interface	+2° to +10°C 5°C	20.2   572	115V 60Hz 220-240V 50/60 Hz	1, glass	1	6	49	24.7 x 58.1 x 24 628 x 1476 x 609	29 x 79.6 x 28.2 737 x 2021 x 715	438 199
HPR120-GX	Horizon Controller	+2° to +10°C 5°C	20.2   572	115V 60Hz 220-240V 50/60 Hz	1, glass	1	6	49	24.7 x 58.1 x 24 628 x 1476 x 609	29 x 78.9 x 28.1 737 x 2003 x 712	487 221
iPR125-GX	i.C3 User Interface	+2° to +10°C 5°C	25.2   714	115V 60Hz 220-240V 50/60 Hz	1, glass	1	6	49	24.7 x 58.1 x 30 628x x1476 x 726	29 x 79.6 x 34.2 737 x 2021 x 867	517 235
HPR125-GX	Horizon Controller	+2° to +10°C 5°C	25.2   714	115V 60Hz 220-240V 50/60 Hz	1, glass	1	6	49	24.7 x 58.1 x 30 628x x1476 x 726	29 x 78.9 x 34.1 737 x 2003 x 865	514 234
iPR245-GX	i.C3 User Interface	+2° to +10°C 5°C	44.9   1271	115V 60Hz 220-240V 50/60 Hz	2, glass	2	12	52	54.7 x 58.1 x 24 1390 x 1476 x 609	59 x 79.6 x 28 1499 x 2021 x 712	775 352
HPR245-GX	Horizon Controller	+2° to +10°C 5°C	44.9   1271	115V 60Hz 220-240V 50/60 Hz	2, glass	2	12	52	54.7 x 58.1 x 24 1390 x 1476 x 609	59 x 78.9 x 28.1 1499 x 2003 x 712	774 351
iPR256-GX	i.C3 User Interface	+2° to +10°C 5°C	56   1586	115V 60Hz 220-240V 50/60 Hz	2, glass	2	12	52	54.7 x 58.1 x 30 1390 x 1476 x 762	59 x 79.6 x 34.1 1499 x 2021 x 865	827 376
HPR256-GX	Horizon Controller	+2° to +10°C 5°C	56   1586	115V 60Hz 220-240V 50/60 Hz	2, glass	2	12	52	54.7 x 58.1 x 30 1390 x 1476 x 762	59 x 78.9 x 34.1 1499 x 2003 x 865	817 371

\*Exterior dimensions do not include handle or user interface

# GX Solutions Professional Medical-grade Blood Bank Refrigerators



## Blood and Blood Component Storage

GX professional medical-grade undercounter blood bank refrigerators feature solid, stainless steel pull out drawers. They are designed to meet the strict requirements of AABB for secure storage of whole blood and blood components.

- » Powered by OptiCool™ cooling technology which pairs a variable capacity compressor (VCC) and natural hydrocarbon (HC) refrigerants to create a refrigerator with optimized control in temperature, noise and energy management
- » Factory pre-set to 4°C to meet blood storage guidelines
- » 50-65% more energy efficient than traditional medical-grade
- » Quiet operation for improved work environment (U/C 42dB, Upright 47-50dB)
- » Sustainable U.S. EPA, SNAP, and EU F-Gas compliant natural refrigerants and foaming agents support sustainability
- » ADA compliant full-length handle and compatible with ADA compliant countertops



ENERGY STAR® certified\*



## Construction

- » Forced-air circulation maintains chamber temperature uniformity and provides quick recovery after door openings
- » No defrost cycle required to maintain constant temperature
- » Undercounter solid, self-closing door maintains optimal storage conditions and is field-reversible
- » Upright models include a dual-pane glass door(s) with ADA compliant full-length handle
- » Solid, stainless steel pull out drawers with liquid-tight construction for containment of spills; fully extendable
- » Chart recorder with 7-day circular charts (inkless)
- » Bacteria-resistant powder coated interior and exterior
- » Swivel, locking casters (upright) / Leveling feet (U/C)
- » Recessed floor contains spills for easy clean up and maintain integrity of other stored products
- » Key lock, settings security and optional access control



i.Series®

Horizon Series™

### GX professional, medical-grade blood bank refrigerators - undercounter

Model Number	Monitor	Temp Range Setpoint	Capacity cu ft   L	Bags	Electrical	Doors	Solid Drawers	Sound dB	Interior Dimensions w x h x d in. mm	Exterior Dimensions* w x h x d in. mm	Net Weight lb   kg
iBR105-GX	i.C3 User Interface	+2° to +10°C 4°C	5.3 cu ft   150 L	78	115V 60Hz 220-240V 50/60Hz	1, solid	2	42	19.5 x 19.9 x 22.8 496 x 505 x 580	24 x 31.5 x 26.7 610 x 798 x 678	186 85
HBR105-GX	Horizon Controller	+2° to +10°C 4°C	5.3 cu ft   150 L	78	115V 60Hz 220-240V 50/60Hz	1, solid	2	42	19.5 x 19.9 x 22.8 496 x 505 x 580	24 x 31.5 x 26.7 610 x 798 x 678	184 84

Can be used undercounter, free-standing or stacked

\*Exterior dimensions do not include handle or user interface

Refrigerators meet IEC 61010 Standard, are FDA Class 2 510k Exempt and EU Class IIa, and are AABB Standards compliant. Products are certified to applicable UL and CSA standards by a NRTL.



# GX Solutions Blood Bank Refrigerators



*i.Series® models*



*Horizon Series™ models*

## GX professional, medical-grade blood bank refrigerators - upright

Model Number	Monitor	Temp Range Setpoint	Capacity cu ft   L	Bags	Electrical	Doors	Solid Drawers	Sound dB	Interior Dimensions w x h x d in. mm	Exterior Dimensions* w x h x d in. mm	Net Weight lb   kg
iBR113-GX	i.C3 User Interface	+2° to +10°C 4°C	13.3   377	198	115V 60Hz 220-240V 50/60 Hz	1, glass	5	39	20 x 49.4 x 22.9 508 x 1255 x 583	24.8 x 70.5 x 26.2 628 x 1790 x 664	342 156
HBR113-GX	Horizon Controller	+2° to +10°C 4°C	13.3   377	198	115V 60Hz 220-240V 50/60 Hz	1, glass	5	39	20 x 49.4 x 22.9 508 x 1255 x 583	24.8 x 70.5 x 26.1 628 x 1790 x 663	337 153
iBR120-GX	i.C3 User Interface	+2° to +10°C 4°C	20.2   572	364	115V 60Hz 220-240V 50/60 Hz	1, glass	7	49	24.7 x 58.1 x 24 628 x 1476 x 609	29 x 79.6 x 28.2 737 x 2021 x 715	507 230
HBR120-GX	Horizon Controller	+2° to +10°C 4°C	20.2   572	364	115V 60Hz 220-240V 50/60 Hz	1, glass	7	49	24.7 x 58.1 x 24 628 x 1476 x 609	29 x 78.9 x 28.1 737 x 2003 x 712	504 229
iBR125-GX	i.C3 User Interface	+2° to +10°C 4°C	25.2   714	504	115V 60Hz 220-240V 50/60 Hz	1, glass	7	49	24.7 x 58.1 x 30 628x x1476 x 726	29 x 79.6 x 34.2 737 x 2021 x 867	535 243
HBR125-GX	Horizon Controller	+2° to +10°C 4°C	25.2   714	504	115V 60Hz 220-240V 50/60 Hz	1, glass	7	49	24.7 x 58.1 x 30 628x x1476 x 726	29 x 78.9 x 34.1 737 x 2003 x 865	532 242
iBR245-GX	i.C3 User Interface	+2° to +10°C 4°C	44.9   1271	728	115V 60Hz 220-240V 50/60 Hz	2, glass	14	52	54.7 x 58.1 x 24 1390 x 1476 x 609	59 x 79.6 x 28 1499 x 2021 x 712	809 367
HBR245-GX	Horizon Controller	+2° to +10°C 4°C	44.9   1271	728	115V 60Hz 220-240V 50/60 Hz	2, glass	14	52	54.7 x 58.1 x 24 1390 x 1476 x 609	59 x 78.9 x 28.1 1499 x 2003 x 712	808 367
iBR256-GX	i.C3 User Interface	+2° to +10°C 4°C	56   1586	1008	115V 60Hz 220-240V 50/60 Hz	2, glass	14	52	54.7 x 58.1 x 30 1390 x 1476 x 762	59 x 79.6 x 34.1 1499 x 2021 x 865	863 392
HBR256-GX	Horizon Controller	+2° to +10°C 4°C	56   1586	1008	115V 60Hz 220-240V 50/60 Hz	2, glass	14	52	54.7 x 58.1 x 30 1390 x 1476 x 762	59 x 78.9 x 34.1 1499 x 2003 x 865	817 371

*Exterior dimensions do not include handle or user interface*

*Refrigerators meet IEC 61010 Standard, are FDA Class 2 510k Exempt and EU Class IIa, and are AABB Standards compliant.*

## GX Solutions Professional Medical-grade Laboratory Refrigerators



### Clinical Samples, Reagents and Controls Storage

GX professional medical-grade laboratory refrigerators feature ventilated shelves and are designed for secure storage of patient samples, reagents, laboratory media and other products requiring safe cold storage.

- » Powered by OptiCool™ cooling technology which pairs a variable capacity compressor (VCC) and natural hydrocarbon (HC) refrigerants to create a refrigerator with optimized control in temperature, noise and energy management
- » Factory pre-set to 4°C for laboratory applications
- » 50-65% more energy efficient than traditional medical-grade
- » Quiet operation for improved work environment (U/C 42dB, Upright 47-50dB)
- » Sustainable U.S. EPA, SNAP, and EU F-Gas compliant natural refrigerants and foaming agents support sustainability
- » Meets NSF/ANSI 456 Vaccine Storage Standard requirements when configured with NSF/ANSI 456 certification option
- » ADA compliant full-length handle and compatible with ADA compliant countertops



ENERGY STAR® certified\*

### Construction

- » Forced-air circulation maintains chamber temperature uniformity and provides quick recovery after door openings
- » No defrost cycle required to maintain constant temperature
- » Undercounter solid, self-closing door maintains optimal storage conditions and is field-reversible
- » Upright models include a dual-pane glass door(s) with ADA compliant full-length handle
- » Ventilating shelves with side and rear guards are adjustable for storage flexibility
- » Bacteria-resistant powder coated interior and exterior
- » Swivel, locking casters (upright) / Leveling feet (U/C)
- » Recessed floor contains spills for easy clean up and to maintain integrity of other stored products
- » Key lock, settings security and optional access control



i.Series®



Horizon Series™

### GX professional, medical-grade laboratory refrigerators - undercounter

Model Number	Monitor	Temp Range Setpoint	Capacity cu ft   L	Electrical	Doors	Ventilated Shelves	Sound dB	Interior Dimensions w x h x d in. mm	Exterior Dimensions* w x h x d in. mm	Net Weight lb   kg
iLR105-GX	i.C3 User Interface	+2° to +10°C 4°C	5.3 150	115V 60Hz 220-240V 50/60Hz	1 Solid	2	42	19.5 x 19.9 x 22.8 496 x 505 x 580	24 x 31.5 x 26.7 610 x 796 x 678	174 79
HLR105-GX	Horizon Controller	+2° to +10°C 4°C	5.3 150	115V 60Hz 220-240V 50/60Hz	1 Solid	2	42	19.5 x 19.9 x 22.8 496 x 505 x 580	24 x 31.5 x 26.7 610 x 796 x 678	174 79

Can be used undercounter, free-standing or stacked \*Exterior dimensions do not include handle or user interface



## GX professional, medical-grade laboratory refrigerators - upright

Model Number	Monitor	Temp Range Setpoint	Capacity cu ft   L	Electrical	Doors	Ventilated Shelves	Sound dB	Interior Dimensions w x h x d in. mm	Exterior Dimensions* w x h x d in. mm	Net Weight lb   kg
iLR113-GX	i.C3 User Interface	+2° to +10°C 4°C	13.3   377	115V 60Hz 220-240 50/60 Hz	1, glass	4	39	20 x 49.4 x 22.9 508 x 1255 x 583	24.8 x 70.5 x 26.2 628 x 1790 x 664	306   139
HLR113-GX	Horizon Controller	+2° to +10°C 4°C	13.3   377	115V 60Hz 220-240 50/60 Hz	1, glass	4	39	20 x 49.4 x 22.9 508 x 1255 x 583	24.8 x 70.3 x 26.1 628 x 1785 x 663	306   139
iLR120-GX	i.C3 User Interface	+2° to +10°C 4°C	20.2   572	115V 60Hz 220-240 50/60 Hz	1, glass	4	49	24.7 x 58.1 x 24 628 x 1476 x 609	29 x 79.6 x 28.2 737 x 2021 x 715	445   202
HLR120-GX	Horizon Controller	+2° to +10°C 4°C	20.2   572	115V 60Hz 220-240 50/60 Hz	1, glass	4	49	24.7 x 58.1 x 24 628 x 1476 x 609	29 x 78.9 x 28.1 737 x 2003 x 712	442   201
iLR125-GX	i.C3 User Interface	+2° to +10°C 4°C	25.2   714	115V 60Hz 220-240 50/60 Hz	1, glass	4	49	24.7 x 58.1 x 30 628x x1476 x 726	29 x 79.6 x 34.2 737 x 2021 x 867	456   207
HLR125-GX	Horizon Controller	+2° to +10°C 4°C	25.2   714	115V 60Hz 220-240 50/60 Hz	1, glass	4	49	24.7 x 58.1 x 30 628x x1476 x 726	29 x 78.9 x 34.1 737 x 2003 x 865	453   206
iLR245-GX	i.C3 User Interface	+2° to +10°C 4°C	44.9   1271	115V 60Hz 220-240 50/60 Hz	2, glass	8	52	54.7 x 58.1 x 24 1390 x 1476 x 609	59 x 79.6 x 28 1499 x 2021 x 712	667   303
HLR245-GX	Horizon Controller	+2° to +10°C 4°C	44.9   1271	115V 60Hz 220-240 50/60 Hz	2, glass	8	52	54.7 x 58.1 x 24 1390 x 1476 x 609	59 x 78.9 x 28.1 1499 x 2003 x 712	667   303
iLR256-GX	i.C3 User Interface	+2° to +10°C 4°C	56   1586	115V 60Hz 220-240 50/60 Hz	2, glass	8	52	54.7 x 58.1 x 30 1390 x 1476 x 762	59 x 79.6 x 34.1 1499 x 2021 x 865	703   319
HLR256-GX	Horizon Controller	+2° to +10°C 4°C	56   1586	115V 60Hz 220-240 50/60 Hz	2, glass	8	52	54.7 x 58.1 x 30 1390 x 1476 x 762	59 x 78.9 x 34.1 1499 x 2003 x 865	693   315

\*Exterior dimensions do not include handle or user interface

## GX Solutions Professional Medical-grade Pass-Thru Refrigerators



### Pass-Thru Refrigerators

GX Solutions professional medical-grade pass-thru refrigerators provide optimal temperature performance, energy savings and lower noise levels and are designed for busy pharmacies and blood storage facilities. They allow access from the front and back for more convenient access to stored products. This is particularly useful when either convenience or content protection is desired when transferring contents between locations.

- » Powered by OptiCool™ cooling technology which pairs a variable capacity compressor (VCC) and low-GWP natural hydrocarbon (HC) refrigerants to create a refrigerator with optimized control in temperature, noise and energy management
- » Validation studies completed to ensure optimum temperature performance with frequent door openings and heavy ambient loads to help avoid nuisance alarms and out-of-temperature events
- » Up to 50% more energy efficient than traditional medical-grade
- » Quiet operation for improved work environment
- » Sustainable U.S. EPA, SNAP, and EU F-Gas compliant natural refrigerants and foaming agents support sustainability

### Construction

- » Forced-air circulation maintains chamber temperature uniformity and provides quick recovery after door openings
- » No defrost cycle required to maintain constant temperature
- » Dual-pane glass doors with ADA compliant full-length handles
- » Ventilated shelves and/or solid, liquid-tight, stainless steel two-way drawers; easy-to-clean and adjustable for storage flexibility
- » Drawer mid-stop catch ensures proper closure to maximize airflow, maintain temperature uniformity, and protect glass doors from slide-throughs
- » Bacteria-resistant powder coated interior and exterior
- » Swivel, locking casters
- » Recessed floor contains spills for easy clean up and to maintain integrity of stored product
- » Key lock, settings security



## GX Solutions Professional medical-grade Pass-Thru Refrigerators



### Pharmacy Pass-Thru Refrigerators for Medication and Vaccine Storage

GX professional medical-grade pharmacy pass-thru refrigerators enhance pharmacy workflows when positioned between two spaces such as a clean room and an ante room. They are designed for secure storage of vaccines, pharmaceuticals, chemotherapy and other products requiring safe cold storage in a clean room environment.

For busy cleanroom compounding pharmacies with heavy ambient product loads, Helmer GX pass-thru refrigerators provide optimal refrigeration performance for safe dependable storage without nuisance alarms, even with frequent and extended door openings.

- » Factory pre-set to 5°C for pharmacy applications
- » Helps meet USP <797> clean room requirements
- » Supports CDC guidelines for vaccine storage
- » Interlock i.Lock™ technology electronically locks the door(s) when the opposite side is opened (option on i.Series pharmacy models only)

#### GX professional, medical-grade pharmacy refrigerators - pass-thru

Model Number	Monitor	Temp Range Setpoint	Capacity cu ft   L	Electrical	Doors	Ventilated Shelves	Drawers	Sound dB	Interior Dimensions w x h x d in   mm	Exterior Dimensions* w x h x d in   mm	Net Weight lb   kg
iPR226-GX	i.C3 User Interface	+2° to +10°C 5°C	26.4   747	115V 60Hz 220-240V 50/60 Hz	2, glass	3	3	56	24.7 x 58.1x 31.8 628 x 1476 x 809	29 x 79.6 x 35.8 737 x 2021 x 1014	526   239
HPR226-GX	Horizon Controller	+2° to +10°C 5°C	26.4   747	115V 60Hz 220-240V 50/60 Hz	2, glass	3	3	56	24.7 x 58.1x 31.8 628 x 1476 x 809	29 x 79.3 x 35.8 737 x 2013 x 1014	523   237
iPR458-GX	i.C3 User Interface	+2° to +10°C 5°C	58.5   1656	115V 60Hz 220-240V 50/60 Hz	4, glass	6	6	54	54.7 x 58.1 x 31.8 1390 x 1476 x 809	59 x 79.6 x 35.8 1499 x 2021 x 1014	868   394
HPR458-GX	Horizon Controller	+2° to +10°C 5°C	58.5   1656	115V 60Hz 220-240V 50/60 Hz	4, glass	6	6	54	54.7 x 58.1 x 31.8 1390 x 1476 x 809	59 x 79.3 x 35.8 1499 x 2013 x 1014	862   391



### Blood Bank Pass-Thru Refrigerators for blood storage

GX professional medical-grade blood bank pass-thru refrigerators feature solid, stainless steel two-way drawers for secure storage of whole blood and blood components.

- » Factory pre-set to 4°C to meet blood storage guidelines

#### GX professional, medical-grade blood bank refrigerators - pass-thru

Model Number	Monitor	Temp Range Setpoint	Capacity cu ft   L	Bags	Electrical	Doors	Drawers	Sound level DB	Interior Dimensions w x h x d in   mm	Exterior Dimensions* w x h x d in   mm	Net Weight lb   kg
iBR226-GX	i.C3 User Interface	+2° to +10°C 4°C	26.4   747.6	432	115V 60Hz 220-240V 50/60 Hz	2, glass	6	56	24.7 x 58.1x 31.8 628 x 1476 x 809	29 x 79.6 x 35.8 737 x 2021 x 1014	548   249
HBR226-GX	Horizon Controller	+2° to +10°C 4°C	26.4   747.6	432	115V 60Hz 220-240V 50/60 Hz	2, glass	6	56	24.7 x 58.1x 31.8 628 x 1476 x 809	29 x 79.3 x 35.8 737 x 2013 x 1014	541   246
iBR458-GX	i.C3 User Interface	+2° to +10°C 4°C	58.5   1656	864	115V 60Hz 220-240V 50/60 Hz	4, glass	12	54	54.7 x 58.1 x 31.8 1390 x 1476 x 809	59 x 79.6 x 35.8 1499 x 2021 x 1014	913   414
HBR458-GX	Horizon Controller	+2° to +10°C 4°C	58.5   1656	864	115V 60Hz 220-240V 50/60 Hz	4, glass	12	54	54.7 x 58.1 x 31.8 1390 x 1476 x 809	59 x 79.3 x 35.8 1499 x 2013 x 1014	899   408

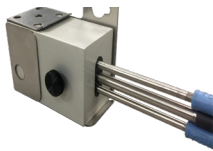
\*Exterior dimensions do not include handle or user interface. See technical data sheet for complete dimensions and build-in guidance.



**Integrated Electromagnetic Access Control** - Offers secure access to the refrigerator via the i.C3® Information Center (i.Series®) or Horizon Access Control Keypad (Horizon Series™).

An electromagnetic lock is integrated into the unit and controlled by PIN or user code. Up to 100 unique user IDs. Key override included. ~Not available on Double-door or Pass-thru models.

**i.Lock™ Interlocking Pass-thru Doors** - Electronically-controlled interlock functionality automatically locks the door(s) on one side of the cabinet when door(s) on the opposite side are opened, preventing doors on both sides of the refrigerator from being opened simultaneously and limiting air exchange through the i.Series® pharmacy refrigerator. ~i.Series® Pharmacy models only.



**Solid Ballast Simulator**- Equivalent temperature performance to glycol bottle, without requiring filling/refilling or other regular maintenance.

**Seismic Floor Anchoring Bracket Kit** - Seismic-rated solution includes brackets installed on floor in the back of the unit and under the door. Covered under an ICC-ES Evaluation Report (ICC-ESR-4233) ~Not available on Pass-thru or undercounter models.

**Floor and Wall Bracket Kit** - Floor mounting brackets and cabinet anchor hardware to secure refrigerator to the building floor and/or wall.

**Remote Lock Adapter Kits** - Locks for automated dispensing cabinets provide additional access control. Special accessories allow proper installation on most Helmer Scientific refrigerators. Compatible with most systems. ~Not available on double door or pass-thru models.

**Temperature Chart Recorders** - Standard on blood bank refrigerators, optional on other models. Chart recorder is 4" (102mm), 7-day, with inkless pressure-sensitive chart paper. Backup battery and box of 52 charts included.

**Pedestal** - Base elevates undercounter refrigerator above the floor. Includes brackets to secure unit to pedestal.

**Stacking Kit** - Hardware to stack two undercounter units.

**Remote Alarms** - Free standing, extend existing alarms to remote locations with audible and visual signals. Operational up to 3000' (914m) from cabinet. Can be connected to a central alarm system.

**Interior LED Light** - Energy-efficient LED lighting illuminates interior and includes on/off switch. ~Standard on Upright and Pass-thru models.

**Customized Storage** - Select from Ventilated Shelves, Ventilated Drawers, Stainless Steel Drawers (i.Series and Horizon Series), Locking Drawers, and bridge shelves. (Not all options available for all models).

**Storage Trays** - Package includes tray, dividers and rails to organize storage areas.

**Drawer Dividers** - Polycarbonate upright or angled dividers for use in solid, pull-out drawers. One set per drawer. ~Not available for all models.

**Stainless Steel Interior and/or Exterior** - Must be ordered as factory-installed options.

**Top Cover** - Ventilated cover for upright refrigerators 20-56 cu ft.

**Door Style** - Undercounter refrigerators come standard with a solid door. Dual-pane glass door is available. Heated glass door available on upright models. All refrigerators are standard right hinged, left-hinged doors may be ordered. Available as a factory option.

**Swivel, Locking Casters** - 2" (50mm) ~Available for UC models.

**Leveling Feet** - Adjust and level unit. ~Not available on Pass-thru models.

**Pass-Thru Finish Trim Kit** - Complete your pass-thru installation with a perimeter frame around the unit which adheres to the walls around refrigerator providing a superior, finished look that is easy to clean. Kits available for single and double-door models. One kit required for each side of refrigerator.

**Pass-Thru Skirt Kit** - Seals the space between the refrigerator and floor. Skirt mounts to bottom of the refrigerator on the clean-room side, creating a barrier. Hardware provided. Kits available for single and double-door models, clean-room side only.

### CUSTOMIZED SERVICE PARTNERSHIP

Is it right for you?



### Service Level Agreements

Medical-grade cold storage units are critical to the delivery of healthcare and are used across hospital departments and ambulatory sites to safeguard medications, vaccines, blood therapies, tissue, patient samples, and reagents/controls. These products are highly regulated, expensive, and require proper temperature-controlled environments.

Properly maintaining cold storage used for clinical applications can be challenging but is necessary to ensure patient safety, maintain regulatory compliance, and prevent financial loss related to downtimes or performance issues.

Customized Service Partnerships and Service Level Agreements can help simplify the management of clinical cold storage, enhance performance, safety, and compliance, and allow your team to focus on patient care.



### Benefits of Service Agreement Solutions

- » **Improved Uptime** - one service provider for all medical-grade cold storage units across the entire enterprise
- » **Regulatory Compliance** - reduce the risk of audit non-compliance by ensuring use of appropriate cold storage equipment and proper maintenance
- » **Single-Point Service Coordination** - reduce time and effort required of clinical staff to manage support networks and coordinate service to maintain cold storage units

---

## GX Solutions

The first professional medical-grade refrigerators.

For medical professionals. Only from Helmer Scientific.

Contact our sales team to learn more about the first professional medical refrigerators on the market, and how they can work in your medical setting. [info.helmerinc.com/GXsolutions](https://info.helmerinc.com/GXsolutions)

ENERGY STAR and the ENERGY STAR mark are registered trademarks owned by the U.S. Environmental Protection Agency. \*ENERGY STAR products are third-party certified by an EPA-recognized certified body. Visit our website for a complete list of ENERGY STAR certified products.

Helmer, i.Series, Horizon Series, i.Lock, and OptiCool are registered trademarks or trademarks of Helmer Inc. in the United States of America. Products are certified to applicable UL and CSA standards by a NRTL. Specifications are subject to change. Not all products are available in all countries.

© 2018-2022 Helmer, Inc. All rights reserved. Lit. # 380410-1/G 08/22



14400 Bergen Boulevard | Noblesville, IN 46060 USA  
Toll Free (U.S. and Canada): 800.743.5637  
Phone: +1.317.773.9073 Fax: +1.317.773.9082  
[www.helmerinc.com](http://www.helmerinc.com)